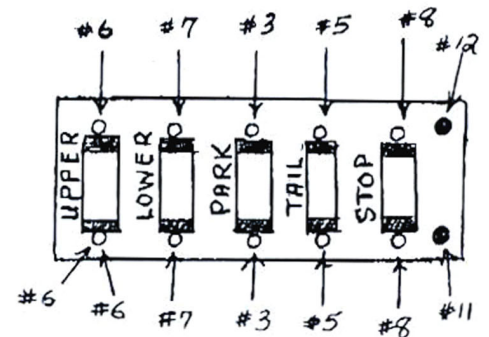


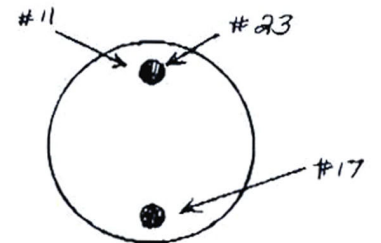
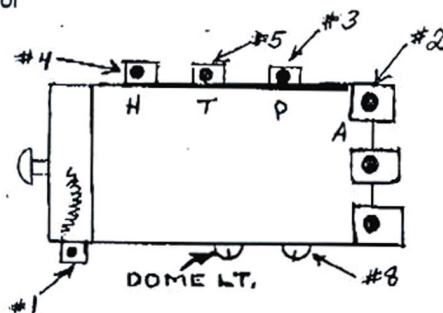
Late 1947 -1949 Chevrolet
1/2 t., 3/4t., 1t., 1 1/2t.

Wire No.	Description
1.	Instrument lamp rheostat switch to instrument lights & ignition switch light (see diagram)
2.	"A" on lighting switch (see diagram)
3.	"P" on lighting switch to fuse block. Also, fuse block to fender junction boards to DS & PS park lights (see diagrams)
4.	"H" on lighting switch to beam selector switch (see diagram)
5.	"T" on lighting switch to fuse block. Also, fuse block to taillight (see diagram)
6.	Beam selector switch to fuse block to DS & PS high beam. Also, to beam indicator light at dash (see diagram)
7.	Beam selector switch to fuse block. Also, fuse block fender junction boards to DS & PS low beam (see diagram)
8.	Lighting switch to fuse block. Also, fuse block to stop light switch (either terminal) (see diagram)
8A.	Stop light switch (terminal opposite #8) to stop light
11.	Fuse block to horn. Also, fuse block to DS ammeter (see diagrams)
12.	Horn to fuse block to in-line connector for horn button (see diagram)
14.	For 1947-48: "A" on generator to "A" on voltage regulator For 1949: "A" on generator to "G" on voltage regulator
15.	"F" on generator to "F" on voltage regulator
17.	For 1947-48: "Batt" on voltage regulator to PS ammeter (see diagram) For 1949: "A" on voltage regulator to PS ammeter (see diagram)
18.	"Batt" or "B" on ignition switch
19.	"Ign" on ignition switch to DS gas gauge
20.	PS gas gauge to gas gauge sending unit
22.	"Ign" on ignition switch to "+" on coil (same connection as #19)
23.	DS ammeter to starting switch (see diagram)
24.	"-" on coil to distributor



FUSE BLOCK

LIGHTING SWITCH



AMMETER