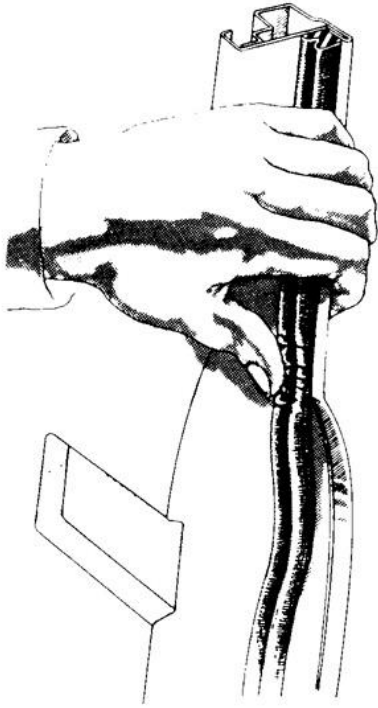
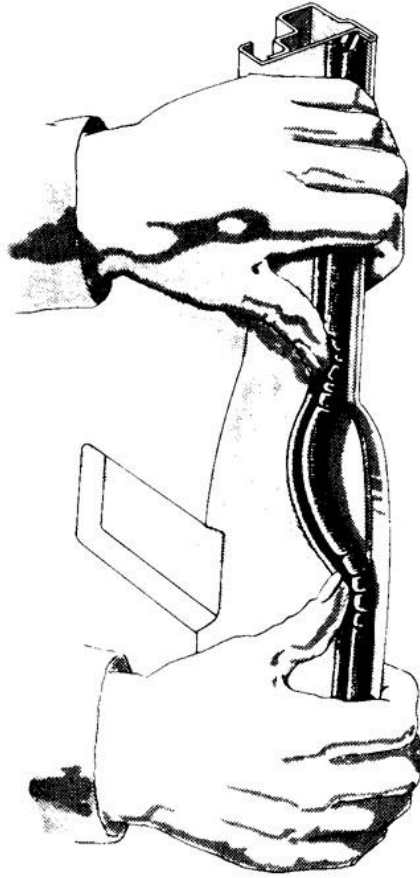


Door Weatherstrip Orientation 1940-48

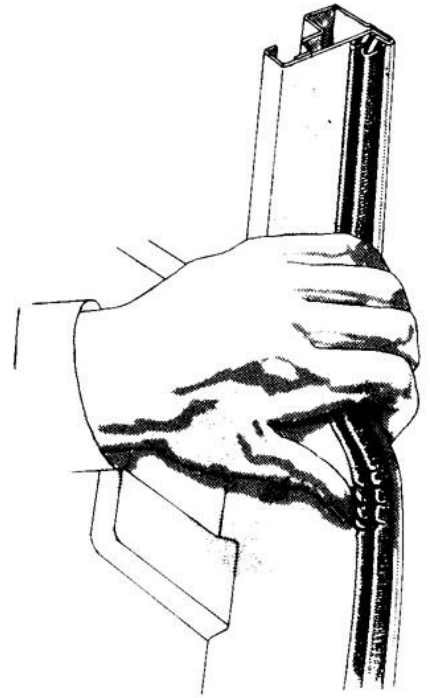
INST #103



FIRST



SECOND



THIRD

Figure No. 32

Progressive method of cementing rubber weatherstrip at curves of door panel flange at belt line.

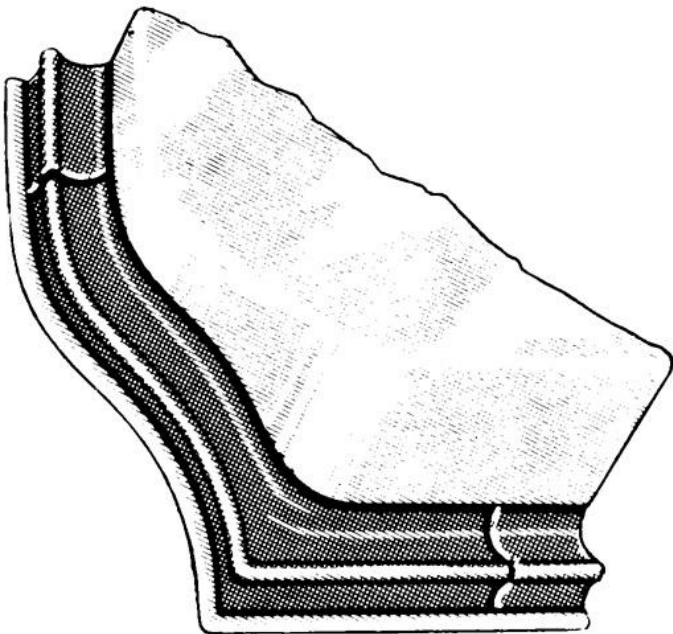


Figure No. 33

Molded type door weatherstrip used at front door lower front corner.

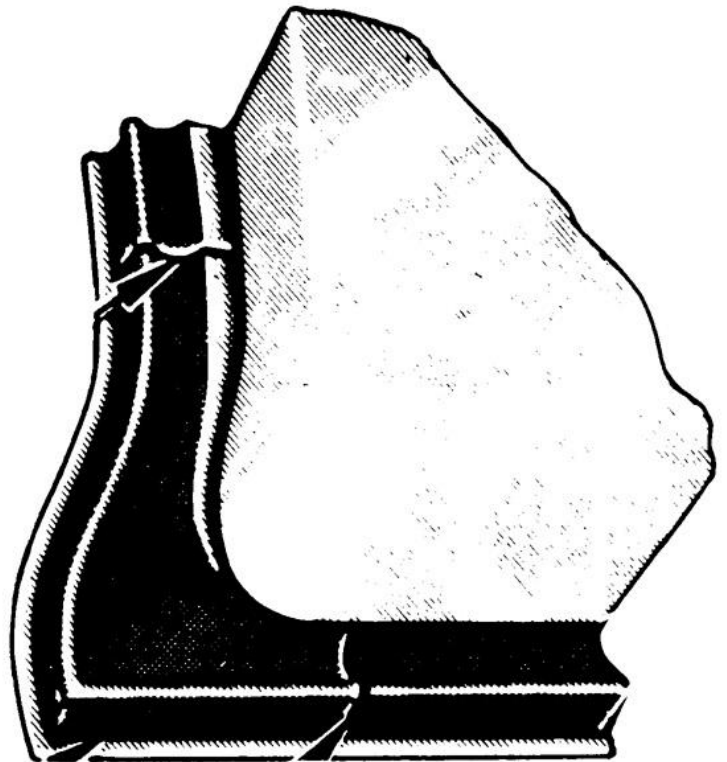


Figure No. 34

Molded type weatherstrip used at front door rear corner and lower corners of rear door.