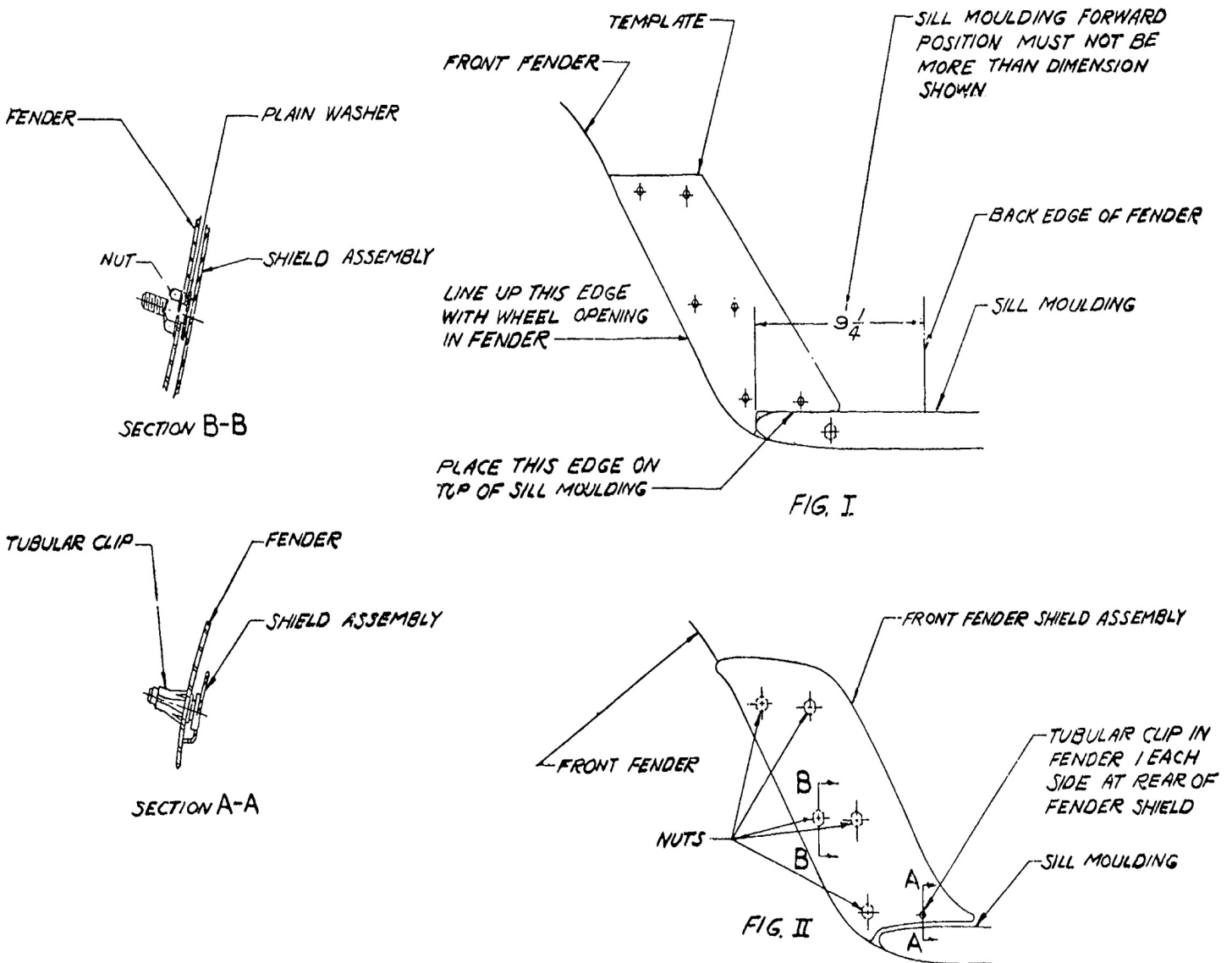


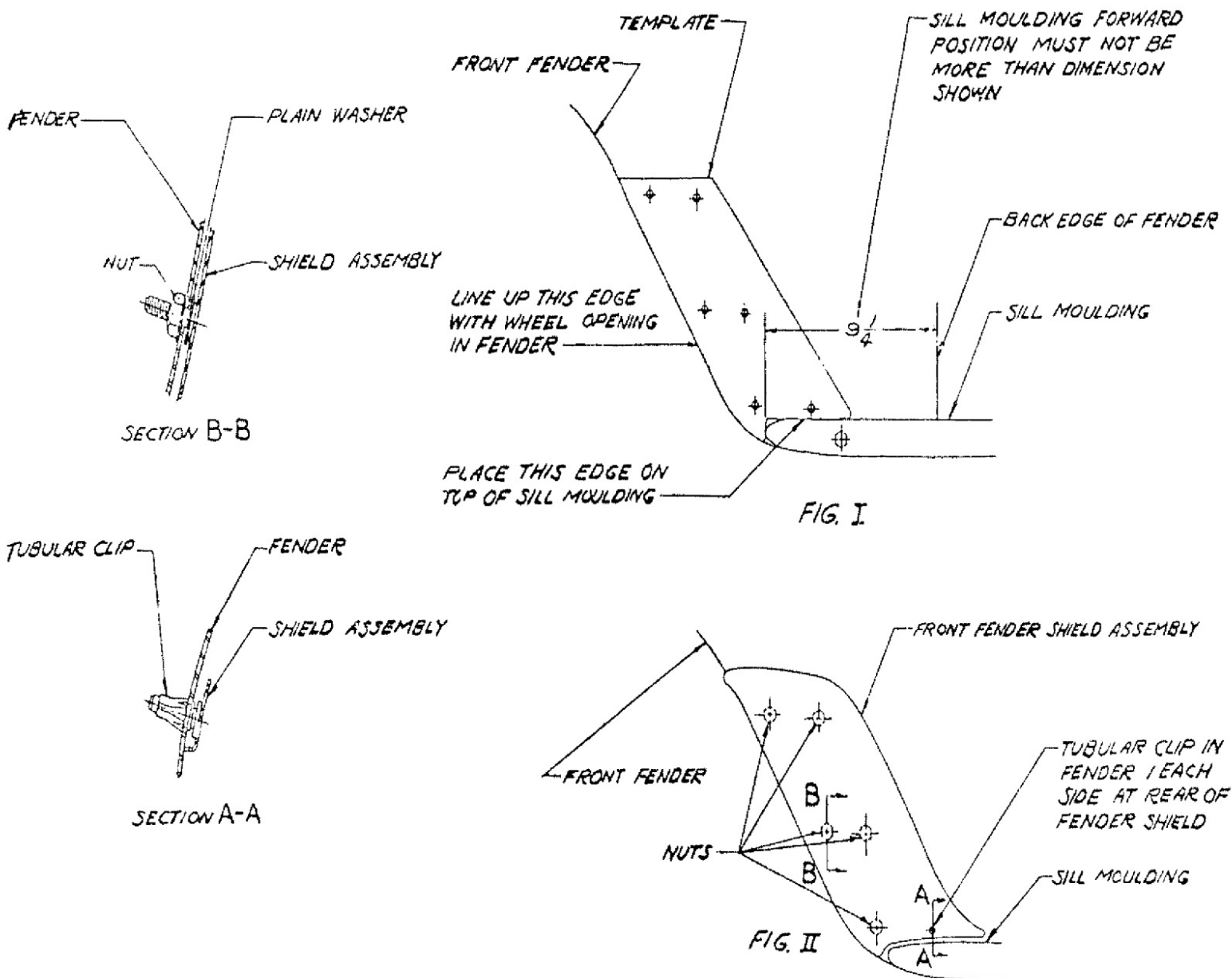
## INSTALLATION INSTRUCTIONS FOR FRONT FENDER SHIELD



1. ALIGN TEMPLATE ON FENDER AND TAPE TO PREVENT ANY MOVEMENT (SEE FIG. I)
2. ADJUST FORE AND AFT POSITION OF SILL MOULDING IF NECESSARY (SEE FIG. I)
3. CENTER PUNCH, REMOVE TEMPLATE AND DRILL HOLES IN FENDER SPECIFIED ON TEMPLATE.
4. INSERT TUBULAR CLIP IN 7/32 DIA HOLE DRILLED IN FENDER (SEE FIG. II)
5. PLACE PLAIN WASHERS ON STUDS OF FENDER SHIELD THAT REQUIRE NUTS (SEE FIG II AND SECTION B-B)
6. MOUNT FENDER SHIELD ON FENDER PUSH STUD FIRMLY INTO TUBULAR CLIP (SEE FIG II AND SECTION A-A) FASTEN 5 REMAINING STUDS WITH NUTS (SEE SECTION B-B)

PART NO. 3704319

## INSTALLATION INSTRUCTIONS FOR FRONT FENDER SHIELD



1. ALIGN TEMPLATE ON FENDER AND TAPE TO PREVENT ANY MOVEMENT (SEE FIG. I)
  2. ADJUST FORE AND AFT POSITION OF SILL MOULDING IF NECESSARY (SEE FIG. I)
  3. CENTER PUNCH, REMOVE TEMPLATE AND DRILL HOLES IN FENDER SPECIFIED ON TEMPLATE.
- INSERT TUBULAR CLIP IN 7/32 DIA HOLE DRILLED IN FENDER (SEE FIG. II)
- PLACE PLAIN WASHERS ON STUDS OF FENDER SHIELD THAT REQUIRE NUTS (SEE FIG II AND SECTION B-B)
- MOUNT FENDER SHIELD ON FENDER PUSH STUD FIRMLY INTO TUBULAR CLIP (SEE FIG II AND SECTION A-A) FASTEN 5 REMAINING STUDS WITH NUTS (SEE SECTION B-B)

PART NO. 370431S